

WARCOFORUM

Los Angeles County Museum of Art, an international celebration of the arts

September, 1985



A continuing series on Uarco customers...

Los Angeles County Museum of Art

It is one of the youngest general art museums in America. Yet, on the occasion of the Los Angeles County Museum of Art's tenth anniversary, the distinguished British journal *Apollo* stated, "No other museum has come so far so fast." Today, 20 years after its founding, the Museum has become an international forum for its prominent collections, special exhibitions, extensive educational activities, and its several scholarly centers and libraries. The membership of 72,000 is the second largest in the country.

The Museum was originally a division of the Los Angeles County Museum of History, Science and Art, founded in 1913. By 1961, a need had grown for Los Angeles to have its own separate, major art museum. A committee was formed of private citizens to explore this possibility and they quickly raised

\$12 million from individuals, corporations, and foundations.

The Los Angeles County Board of Supervisors provided five and a half acres of land for the Museum complex. A design was procured and construction began immediately on three buildings surrounding a central plaza that would house the collections.

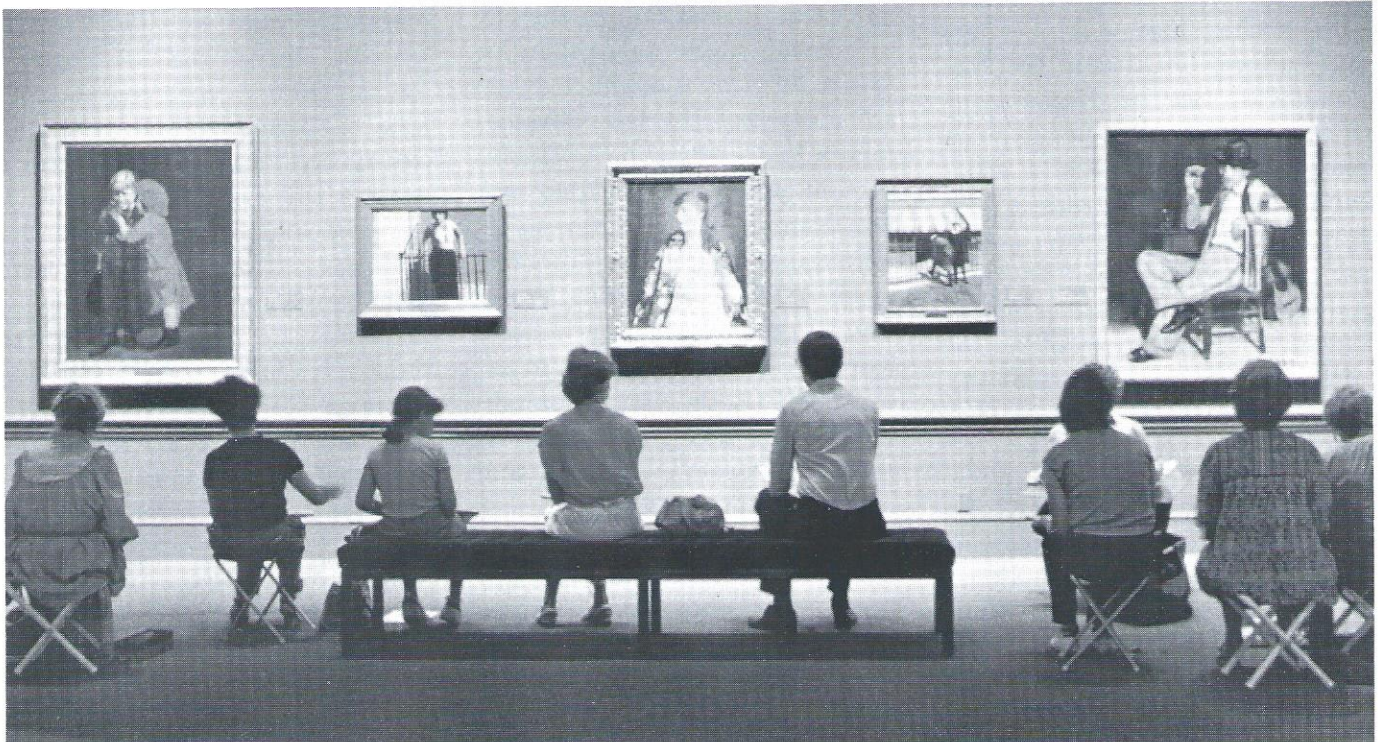
On completion of the original construction program in 1965, the buildings were deeded to the Board of Supervisors as a gift to the people of Los Angeles. The county provides funding for the operation and maintenance of the Museum and the Trustees are responsible for developing policy, overseeing operations, seeking private funding and enriching the collections.

The Museum consists of nine curatorial departments for American

Art, European Paintings and Sculpture, Decorative Arts, Far Eastern Art, Indian and Southeast Asian Art, Prints and Drawings, Photography, Costumes and Textiles, and Twentieth Century Art. These extensive and diverse collections make the Los Angeles County Museum of Art one of the most popular art museums in America.

A major expansion program got underway in 1983 as more and more pieces of artwork were acquired and attendance soared. A two-level addition which added galleries for the permanent collection increased the Museum's exhibition space by 30,000 square feet.

In 1984, construction began on a fourth building, a four-level, 115,200 square foot structure which will add a second spacious area for special exhi-



Art students try their hand at sketching some of the paintings in the Museum's Early-20th-Century American Paintings Gallery.

bitions and galleries for the Museum's collection of modern and contemporary art. The Robert O. Anderson Gallery is scheduled for completion in Fall, 1986. The 20th-century collection includes significant examples by Mondrian, Picasso, Gris, Leger, Miro, Rothko, Kline, Pollock, Magritte, Matisse, Frank Stella, Rauschenberg, Frankenthaler, Ruscha and Keinholz, among others.

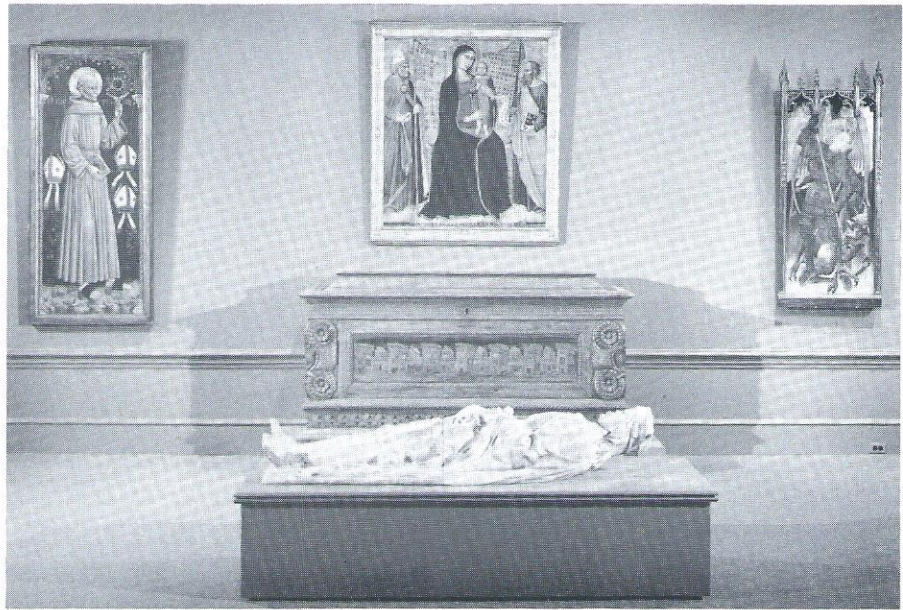
The Museum's collection extends from prehistory through the present and encompasses most of the major civilizations of the world.

In number and quality of objects, the Museum's comprehensive holdings of Indian, Tibetan, Nepalese and Southeast Asian art are among the three greatest collections in the world. The Museum's holdings in the arts of Nepal and Tibet are probably without equal. The ancient West Asian art collection is composed of an extensive series of Luristan bronzes, seals, ancient Iranian pottery and metal objects from Central Asia, Mongolia and Siberia. In addition to the works of nomadic and seminomadic peoples, five reliefs from the 9th-century B.C. palace of Ashurnasirpal II offer examples of the monumentality of Assyrian royal architecture.

The collection of costumes and textiles in the Museum is the largest and most comprehensive in the western United States. The department's holdings, which consist of approximately 35,000 items, have a particular depth and range in the Islamic and Peruvian areas and in Renaissance and 18th-century European costumes and accessories. The Doris Stein Research and Design Center for Costumes and Textiles at the Museum is a unique facility in the United States reflecting the comprehensive quality of the collection that spans 240 cultures and their periods.

Outstanding Pre-Columbian art at the Museum includes stone and ceramic sculpture, and pottery and jades, reflecting the high quality and superior craftsmanship of ancient Mexican art.

The core of the Far Eastern Art collection — which includes works of art from China, Japan and Korea, as well as ceramics from Southeast Asia —



This unique gallery featuring Medieval art will open in early 1986.

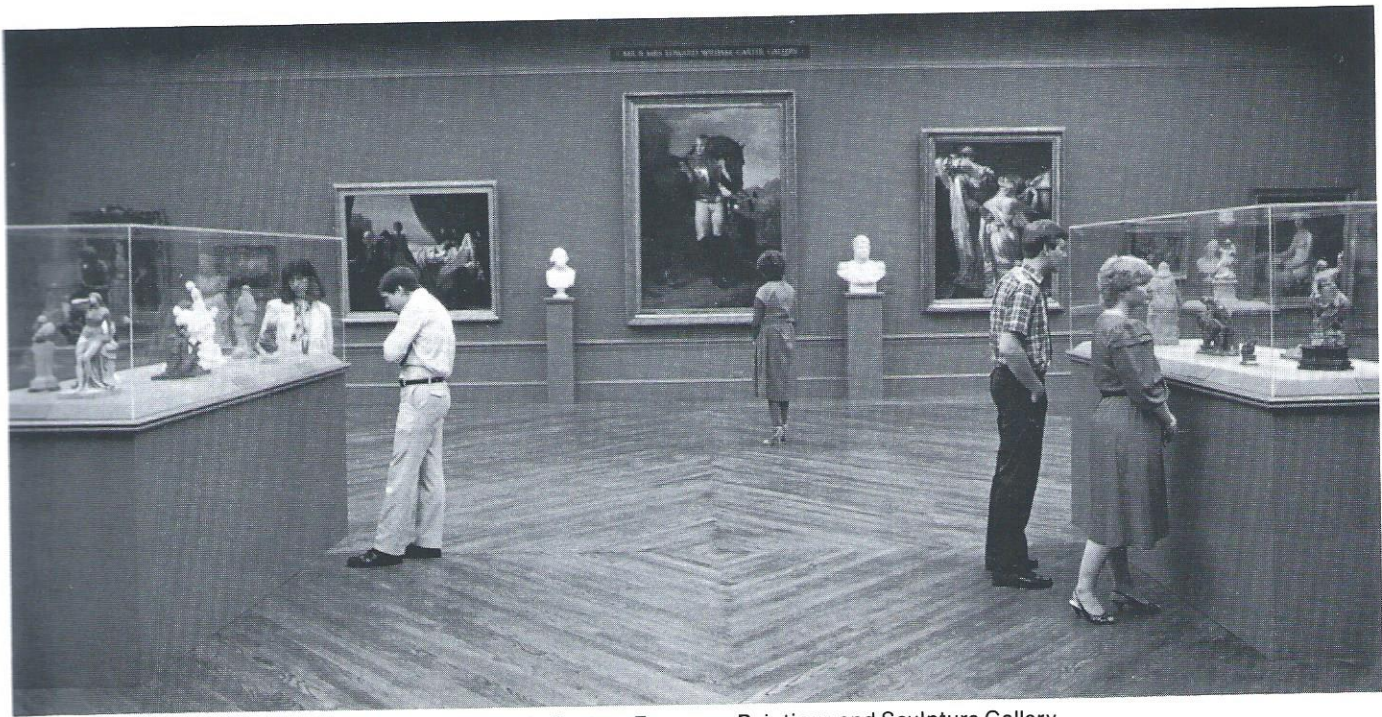
consists of Chinese and Japanese ceramics, scrolls, screens and sculptures. In 1983, the Museum received as a promised gift from Mr. and Mrs. Joe D. Price the largest gift of Far Eastern art ever in its history — the magnificent and comprehensive collection of Japanese Edo-period paintings considered the most outstanding holding in the Western world. As part of this gift, funds were also donated by the Prices to construct

a Pavilion for Japanese Art, including their holdings called the Shin'enKan Collection, which will open in 1987. This gift elevated the Museum into a leading international center for the exhibition and study of Japanese art.

The Museum's European sculpture collection is particularly strong in Baroque, Neo-Classical and 19th century pieces, but also contains a variety of important earlier works. Montauti's



JARCO sales representative Jim Holmes (left) reviews forms inventory status with Museum data processing manager Jim Schlotter.



Visitors study rare pieces of art in the Museum's 18th-Century European Paintings and Sculpture Gallery.

Triumph of Neptune and Europa is the finest Italian Baroque relief in America.

The important European paintings collection includes George de La Tour's *Magdalen with the Smoking Flame*, Rembrandt's *Raising of Lazarus* and *Portrait of Maarten Looten*, van Dyck's *Andromeda Chained to the Rock*, Canaletto's *Capriccio: Plaza San Marco Looking South and West*, Degas' *Belleli Sisters*, and Pissarro's *Place du Theatre Francais*, additional masterworks by Reni, Chardin, Monet, Cezanne and van Gogh, and Dr. Armand Hammer's internationally renowned master painting collection.

The decorative arts holding of the Museum include one of the finest collections of stained glass in America, with Medieval, Renaissance and Baroque examples from France, Switzerland, Germany and the Netherlands. The important Gilbert Monumental Silver Collection features the work of English master silversmiths DeLamarie and Storr as well as two pairs of gilded royal gates from Kiev. The Gilbert Mosaics Collection of furniture, boxes and jewelry illustrating the art of Florentine and Roman mosaic from the 17th to the early 20th centuries is one of the largest and most comprehensive in the world. The decorative arts collection was enriched in 1983 with the Hans Cohn Collection of Ancient, Islamic

and European Glass, one of the finest and most comprehensive collections of over 250 examples dating from the 6th-century B.C. to the turn of the 20th century.

American art of the 18th, 19th and early 20th centuries is represented by world renowned paintings such as *Cliff Dwellers* by Bellows, *Third Avenue El* by Marsh, Cole's companion pictures *L'Allegro* and *Il Pensive*, and Sargent's *Portrait of Mrs. Edward L. Davis and Her Son Livingston Davis*. The collection also has works by Homer, Cassatt and John Singleton Copley.

Approximately 25,000 works comprise the collection of prints and drawings, which has particular depth in German, Dutch, Flemish and modern prints and drawings. Works by Van Gogh, Dürer, and Rembrandt are in this collection. The internationally renowned Robert Gore Rifkind Collection of German Expressionist prints, drawings and illustrated books — considered the largest and most comprehensive of its kind — gives the Museum an international profile in 20th-century graphic arts.

The Museum places special emphasis on featuring major special exhibitions. It has hosted such exhibitions as *The Treasures of Tutankhamen* (1978), *The Great Bronze Age of China* (1981), *The Avant-Garde in Russia* (1980), *The Shogun*

Age (1983-1984), *A Day in the Country: Impressionism and the French Landscape* (1984) and *The Treasury of San Marco* (1985). Major exhibitions at the Museum this autumn include *Masterpieces from the Cone Collection of the Baltimore Museum of Art* (October 6 through November 24, 1985), *Collection for a King: Old Master Paintings from the Dulwich Picture Gallery* (October 6 through January 5, 1985) and *Leonardo to Van Gogh: Master Drawings from Budapest* (October 10 through December 8, 1985).

With exhibitions and collections as impressive as these, the Los Angeles County Museum of Art is in the forefront of American art museums. Not only has it "come so far so fast," but it is interested in additional expansion to serve the needs of art lovers all over the world.

UARCO participation. The Los Angeles County Museum of Art uses a number of UARCO products including Data-Mailers, pressure sensitive labels, Convelopes, envelopes, custom and stock continuous forms, and forms equipment.

The sales representative. James Holmes of the Los Angeles West sales district services the Museum account. He attended UCLA and the University of Salzburg in Austria and joined UARCO in 1983.